

BS 377 WITH BR 10

BR 10

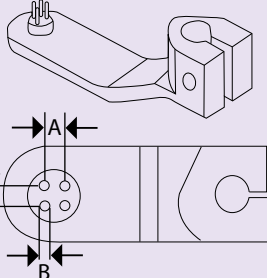
## Global BR 10 AUTOMATIC BUTTON FEEDER

- This robot mechanism device is used to feed the buttons to the button clamp on the button sewing machine. The operator does not need to align the holes of button with increased feeding speed. The sewing machine head speed can be used up to maximum, which results in higher productivity.
- Este dispositivo de mecanismo tipo robot es para alimentar botones a la abrazadera de maquinas de botones. El operador no necesita alinear los agujeros del botón. Con el incremento de velocidad la máquina se puede usar hasta su máximo, para un productividad mas alta.
- Dieser Robotermechanismus führt die Knöpfe automatisch in die Knopfklammer. Die Knopflöcher müssen nicht extra ausgerichtet werden. Durch die verbesserte Zuführungsgeschwindigkeit kann die Nähmaschine mit Maximalgeschwindigkeit laufen und so eine bessere Produktivität garantieren.
- Ce dispositif robot est utilisé pour l'alimentation du bouton dans la pince de la machine pose bouton. L'utilisateur n'a pas besoin d'aligner les trous du bouton. La vitesse d'alimentation du bouton est améliorée, et la machine est utilisée au maximum la machine, permettant plus grande production.

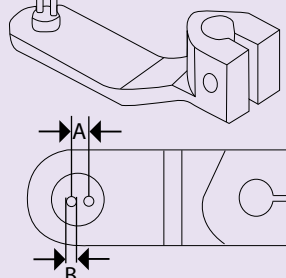
### BUTTON CARRIERS STANDARD WITH THE MACHINE

#### Configuration of button carrier

For 4-holed buttons



For 2-holed buttons



Distance A (mm): Distance between holes in button	Distance B (mm): Diameter of set pin	Distance A (mm): Distance between holes in button	Distance B (mm): Diameter of set pin
2.2	1.0	2.0	1.2
2.4	1.2	2.4	1.2
2.6	1.2	2.6	1.2
2.8	1.2	2.8	1.2
3.0	1.2	3.2	1.2
3.2	1.2	3.4	1.2
3.4	1.2		

### TECHNICAL SPECIFICATIONS

**STITCHTYPE**  
for chainstitch machine

**MACHINE TYPE**  
BS 377 or BS 473

**FEEDING METHOD**  
Electrical/mechanical

**AVAILABLE BUTTON SIZE**  
Width 8-32 mm  
Thickness 1.5 - 7.0 mm

**VOLTAGE**  
220 V 1-phase  
50 Hz

INDUSTRIAL SEWING MACHINES