



## Global OS 7700 P ORNAMENTAL STITCHING MACHINE

### OS 7700 P

- Programmable ornamental stitching machine with 2 needles, which can carry out functional and ornamental stitching on footwear, suitcases and bags as well as on heavy fabrics, such as jeans, tents and sofas. This machine is free programmable and is delivered standard with 100 patterns.
- Máquina de pespunte cruzado para puntadas decorativos de 2 agujas, que puede pespuntar funcional y decorativo tanto en calzado, maletas y morcillas como tejidos pesados como jeans, toldos, tiendas de camping y sofás. La máquina es programable y lleva 100 patrones standar.
- Programmierbare Zierstichmaschine mit 2 Nadeln, die Zierstiche auf Schuhe, Koffern und Taschen sowie schweren Textilien wie z.B. Jeans, Markisen, Zelten und Sofas ausführen kann. Diese Maschine ist frei programmierbar und wird als Standard mit 100 Mustern geliefert.
- Le modèle OS 7700 P est une machine plate 2 aiguilles, pour la réalisation de points utilitaires ou d'ornements dans les domaines de la chaussure, bagagerie, maroquinerie, et également sur des matériaux lourds comme la toile de Jeans, parasols, tentes, sofas . La machine est librement programmable, et comprend en livraison standard 100 dessins.
- O modelo OS 7700 P é uma máquina plana, de duas agulhas, que executa costuras funcionais e ornamentais em gáspeas e malas, bolsas e tecidos pesados como jeans, guarda-sol, toldos e sofás. O modelo OS 7700 P dispõe de 100 programas.

### TECHNICAL SPECIFICATIONS

**MACHINE SPEED**  
max 400 spm

**STITCH LENGTH**  
max 6,5 mm

**PRESSER FOOT LIFT**  
max 10 mm

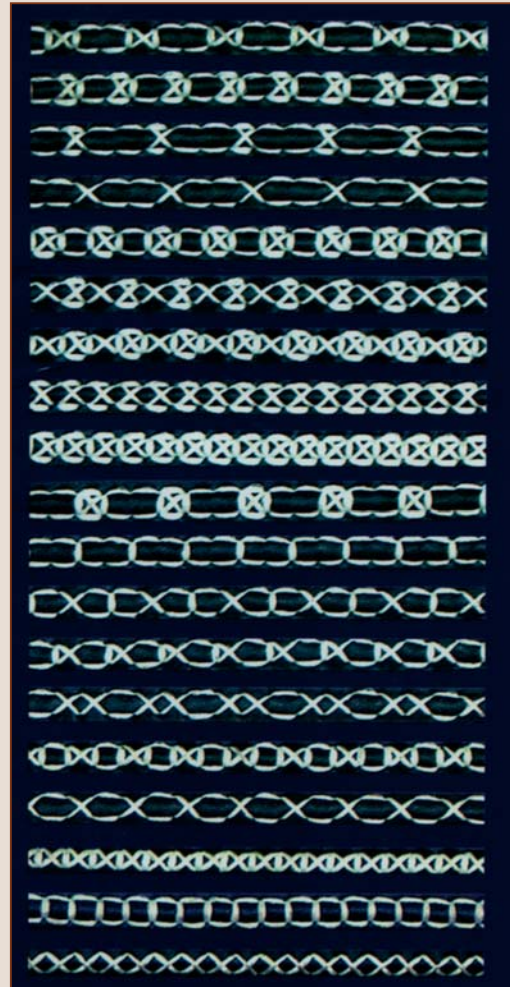
**NEEDLE TYPE**  
DY x 23

**NUMBER OF PATTERNS**  
100

## Global OS 7700 P ORNAMENTAL STITCHING MACHINE

### Some features of OS-7700 P

- 2 needles
- Pneumatic needle switching system
- Large barrel shuttle hook
- 100 standard patterns
- Integrated touch screen control unit in 9 different languages
- Trouble shooting software
- Free programmable with memory function
- Supplied complete with Efka servo motor, stand and tabletop



### SPECIFICATIONS

| MODEL     | NUMBER OF NEEDLES | LARGE BARREL SHUTTLE HOOK | MAX STITCH LENGTH MM | PRESSER FOOT LIFT MM | MAX SEWING SPEED* | NEEDLE SYSTEM | NEEDLE GAUGE STANDARD |
|-----------|-------------------|---------------------------|----------------------|----------------------|-------------------|---------------|-----------------------|
| OS-7700 P | 2                 | •                         | 8                    | 10                   | 400               | DY x 23       | 6 mm                  |